

PRESCRIBED BURN TREATMENT



Photo 1: Prescribed Burn Area, south end looking north before burn.



Photo 2: Prescribed Burn Area, looking west to east, before burn.



Photo 3: Prescribed Burn Area, pre-treatment vegetation.



Photo 4: Ignition of blackline to create a fire break.



Photo 5: Flame lengths typical of heavier fuels.



Photo 6: Spotty character of the burn.



Photo 7: Minimal flame lengths during burn phase.



Photo 8: Burning into the breeze – flames and smoke blowing back toward the burned area.

PRESCRIBED BURN – POST-TREATMENT



Photo 9: Immediately post-burn – mosaic of burned and unburned.



Photo 10: Immediately post-burn – larger burn area.



Photo 11: Immediately post-burn – patchy fire with evidence of low severity burn.



Photo 12: First growing season – burned area after 30 days of grazing.



Photo 13: End of the first growing season.



Photo 14: Mosaic at the end of the first growing season.



Photo 15: Shows the treated area at the end of the 1st growing season with livestock use



Photo 16: The treated area at the end of the 1st growing season with livestock use



Photo 17: Looking across the mosaic landscape at the end of the first growing season



Photo 18: Vegetation during the second growing season post-treatment with livestock-use



Photo 19: Vegetation during the second growing season post-treatment with livestock-use



Photo 20: Vegetation during the second growing season in a heavily treated area, with livestock-use



Photo 21: Vegetation during the second growing season, post-treatment with livestock-use



Photo 22: Vegetation during the second growing season post-treatment with livestock-use



Photo 23: Photo looking towards Stormy Mountain showing vegetation during the second growing season with livestock-use



Photo 24: Photo looking towards Stormy Mountain showing vegetation during the second growing season with livestock-use



Photo 25: Photo showing treated area at the end of the third growing season after treatment



Photo 26: Photo showing treated area at the end of the third growing season after treatment



Photo 27: The treated area four growing seasons later with livestock grazing



Photo 28: The treated area four growing seasons later with livestock grazing



Photo 29: An Island of shrubs within the treated area four growing seasons post treatment



Photo 30: A young and healthy sagebrush plant thriving within treatment area four growing seasons post-treatment



Photo 31: The burn treatment area in August of 2006; four growing seasons after the application of the treatment



Photo 32: The burn treatment area during the fourth growing season post-treatment



Photo 33: Monitoring transect, December 5, 2006.

AERATOR TREATMENT



Photo 1: Pre-treatment vegetation of shrubs and perennial grasses.



Photo 2: Pre-treatment vegetation.



Photo 3: Aerator in operation – first strip.



Photo 4: Aerator in operation – second strip.



Photo 5: Aerator working under dry conditions.



Photo 6: Aerator operating under moist soil conditions.

AERATOR TREATMENT – POST TREATMENT



Photo 7: Aerial view of aerator treatment.



Photo 8: First growing season – livestock had been in pasture for 30 days.



Photo 9: Treated area at the end of the first growing season.



Photo 10: Treated area at the end of the first growing season.



Photo 11: Treated area at the end of the first growing season.



Photo 12: Treated area at the end of the first growing season.



Photo 13: Treated area during the second growing season.



Photo 14: Treated area during the second growing season.



Photo 15: Treated area during the second growing season.

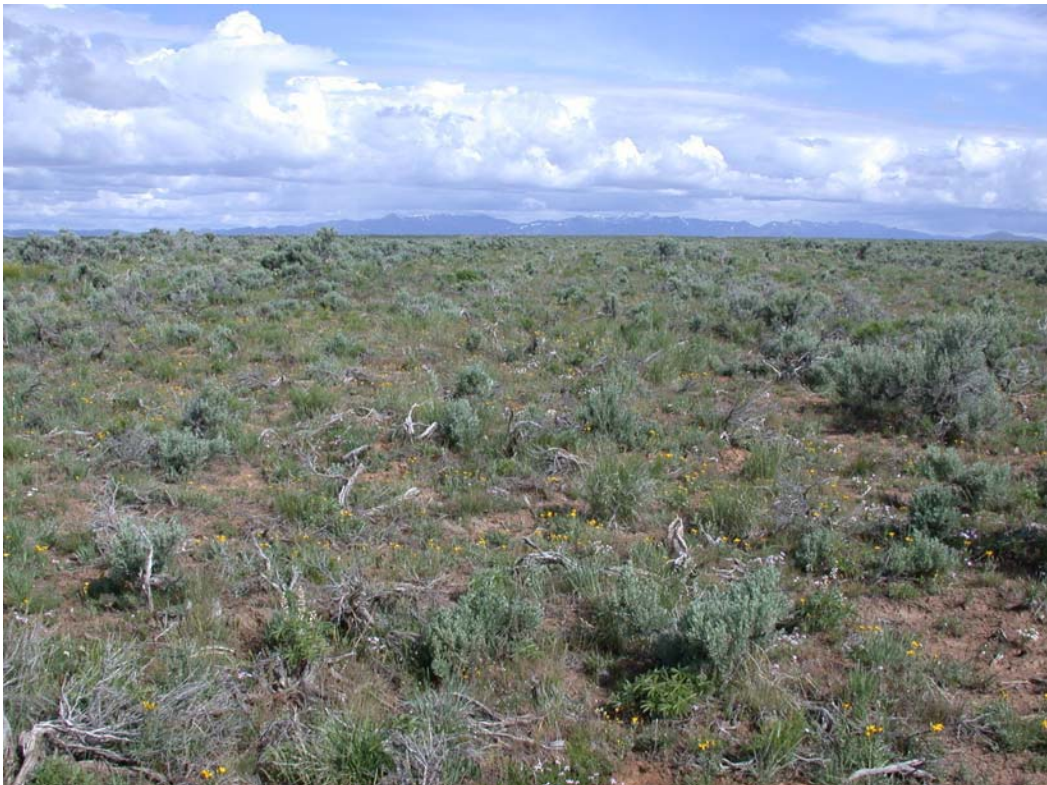


Photo 16: Treated area during the second growing season.



Photo 17: Treated area during the second growing season.



Photo 18: Treated area at the end of the third growing season.



Photo 19: Treated area at the end of the third growing season.



Photo 20: Treated area at the end of the fourth growing season.



Photo 21: Treated area at the end of the fourth growing season.



Photo 22: Treated area at the end of the fourth growing season.



Photo 23: Monitoring transect, December 6, 2006.

DISKING TREATMENT PHOTOS



Photo 1: Pre-treatment vegetation.



Photo 2: Pre-treatment vegetation.



Photo 3: Disc treatment – first strip.



Photo 4: Completed treatment looking diagonally across strips.

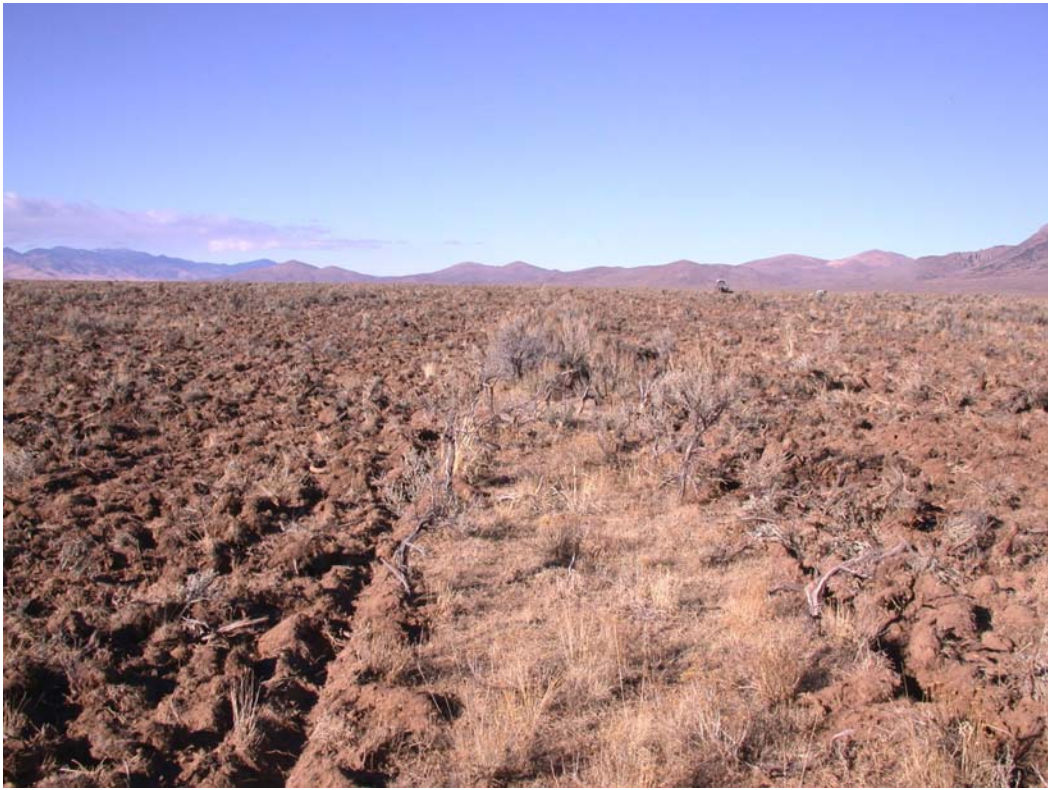


Photo 5: Completed treatment looking down a “leave” strip.



Photo 6: Aerial view of treated area.

DISKING TREATMENT



Photo 7: End of first growing season.



Photo 8. Treated strip and leave strip after first growing season.



Photo 9: Treated strip and leave strip during second growing season.



Photo 10: Treated strip and leave strip during second growing season.



Photo 11: Treated strip and leave strip at the end of the fourth growing season.



Photo 12: Treated strip and leave strip at the end of the fourth growing season.



Photo 13: Treated strip and leave strip at the end of the fourth growing season.



Photo 14: Treated strip and leave strip at the end of the fourth growing season.



Photo 15: Treated strip monitoring transect, December 6, 2006

HERBICIDE TREATMENT PHOTOS



Photo 1: Pre-treatment vegetation.



Photo 2: Pre-treatment vegetation.



Photo 3: Aerial application of herbicide.



Photo 4: Aerial application of herbicide.



Photo 5: Aerial application of herbicide.



Photo 6: The herbicide treatment at the end of the first growing season



Photo 7: The herbicide treatment at the end of the first growing

HERBICIDE POST TREATMENT PHOTO



Photo 8: Treated area during the Second growing season



Photo 9: Treated area monitoring transect, December 6, 2006

CONTROL AREA PHOTOS

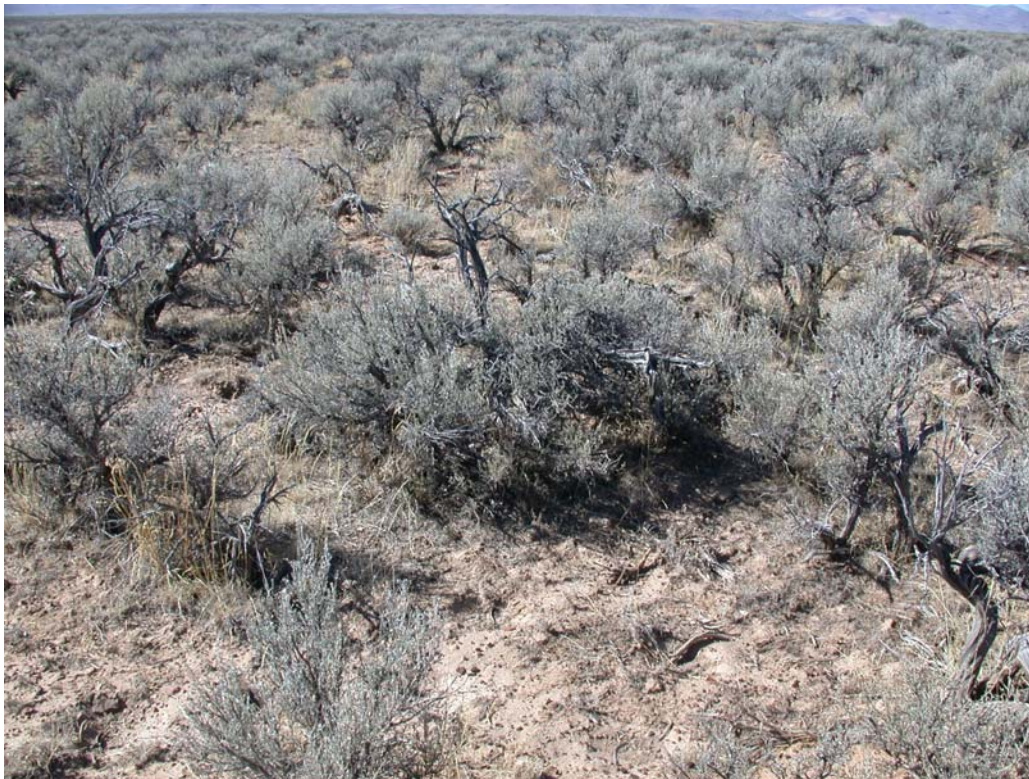


Photo 1: Control area showing old sagebrush and some herbaceous understory, 2003.



Photo 2: Control area with older sagebrush and understory grasses, 2003.



Photo 3: Control area with mixture of shrubs and herbaceous vegetation, 2003.



Photo 4: Control Area, spring of 2004.



Photo 5: Control area, fall of 2005, after grazing.

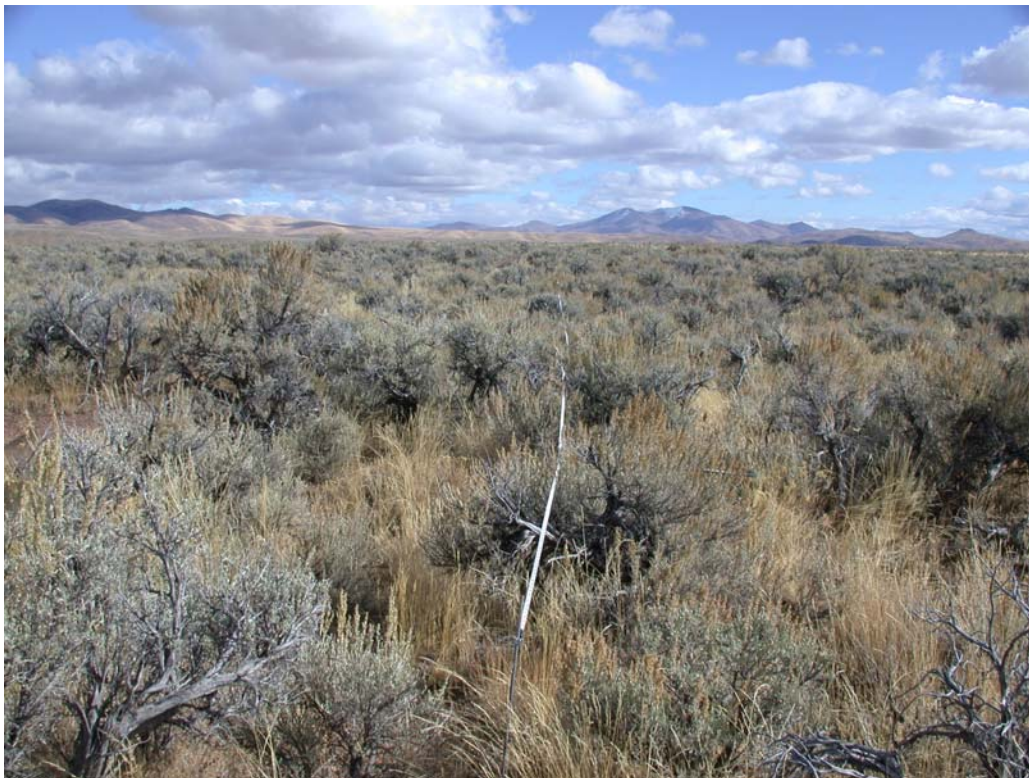


Photo 6: Control area, fall of 2005, after grazing.



Photo 7: Monitoring transect, December 6, 2006.